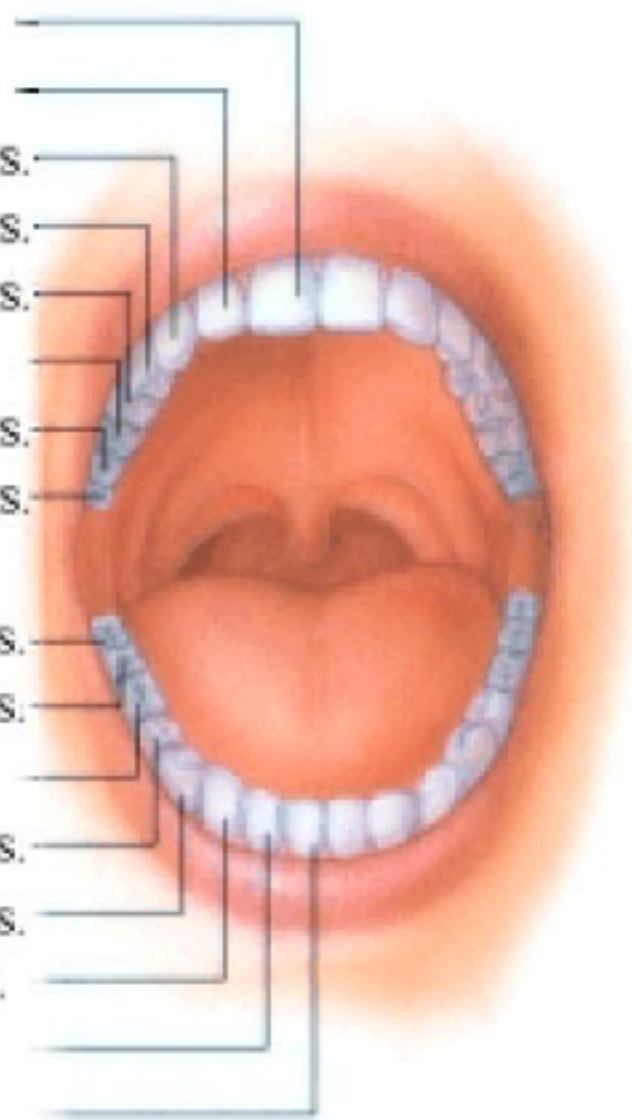
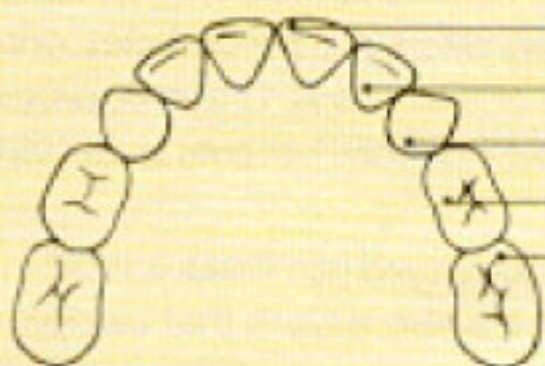


Tooth Development

<u>Upper Teeth</u>	<u>Primary Erupt</u>	<u>Permanent Erupt</u>
Central incisor	8-12 mos.	7-8 yrs.
Lateral incisor	9-13 mos.	8-9 yrs.
Canine	16-22 mos.	11-12 yrs.
First premolar		10-11 yrs.
Second premolar		10-12 yrs.
First molar	13-19 mos.	6-7 yrs.
Second molar	25-33 mos.	12-13 yrs.
Third molar		17-21 yrs.
<u>Lower Teeth</u>		
Third molar		17-21 yrs.
Second molar	23-31 mos.	11-13 yrs.
First molar	14-18 mos.	6-7 yrs.
Second premolar		11-12 yrs.
First premolar		10-12 yrs.
Canine	17-23 mos.	9-10 yrs.
Lateral incisor	10-16 mos.	7-8 yrs.
Central incisor	6-10 mos.	6-7 yrs.



Primary Teeth



Upper Teeth

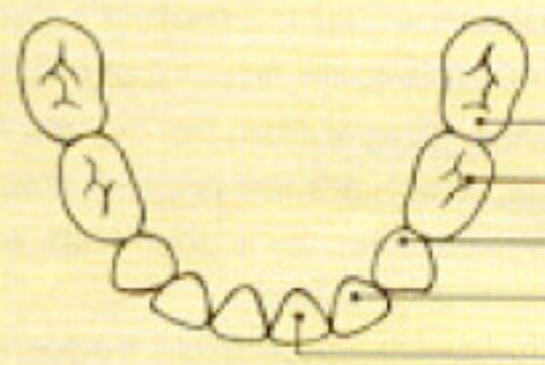
Central incisor
Lateral incisor
Canine (cuspid)
First molar
Second molar

Erupt

8-12 mos.
9-13 mos.
16-22 mos.
13-19 mos.
25-33 mos.

Shed

6-7 yrs.
7-8 yrs.
10-12 yrs.
9-11 yrs.
10-12 yrs.



Lower Teeth

Second molar
First molar
Canine (cuspid)
Lateral incisor
Central incisor

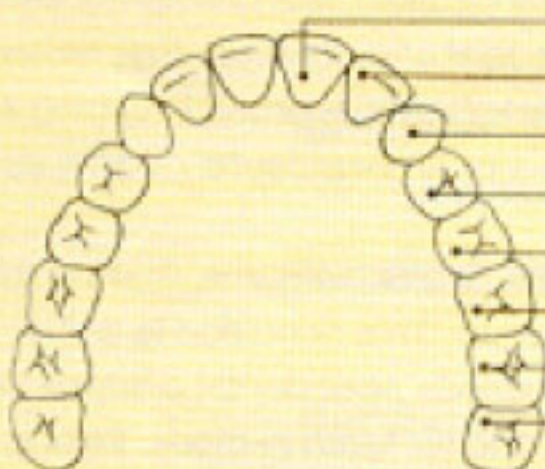
Erupt

23-31 mos.
14-18 mos.
17-23 mos.
10-16 mos.
6-10 mos.

Shed

10-12 yrs.
9-11 yrs.
9-12 yrs.
7-8 yrs.
6-7 yrs.

Permanent Teeth

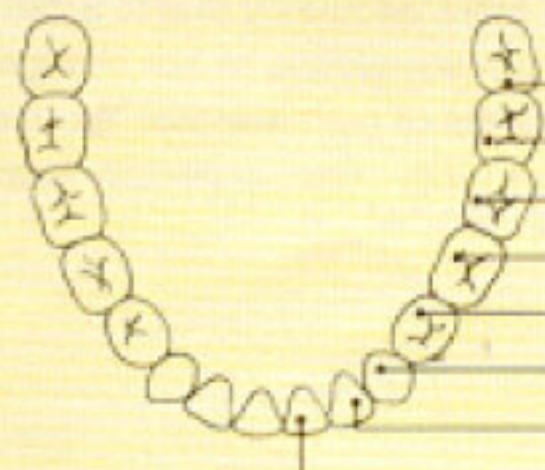


Upper Teeth

Central incisor
Lateral incisor
Canine (cuspid)
First premolar (first bicuspid)
Second premolar (second bicuspid)
First molar
Second molar
Third molar (wisdom tooth)

Erupt

7-8 yrs.
8-9 yrs.
11-12 yrs.
10-11 yrs.
10-12 yrs.
6-7 yrs.
12-13 yrs.
17-21 yrs.



Lower Teeth

Third molar (wisdom tooth)
Second molar
First molar
Second premolar (second bicuspid)
First premolar (first bicuspid)
Canine (cuspid)
Lateral incisor
Central incisor

Erupt

17-21 yrs.
11-13 yrs.
6-7 yrs.
11-12 yrs.
10-12 yrs.
9-10 yrs.
7-8 yrs.
6-7 yrs.